

Secure AES Manager

User's Manual



Table of Contents

Disclaimer of Liability	3
1. Introduction	4
2. System Requirements	5
3. Getting Started	6
3.1 Create Your Private Drive	7
3.2 Login Your Private Drive	9
3.3 Use Your Private Drive	13
3.4 Log Out of Your Private Drive.....	13
4. Advanced Setting	16
4.1 Change Your Password	16
4.2 Write-Protect Setting.....	17
5. Troubleshooting	20
5.1 Lost Password	20
5.2 Preventing Data Loss	20
5.3 Open Connection Error	20
6. FAQ	21
7. Technical Support and Contact Information	22

Disclaimer of Liability

The software embedded in the product is copyrighted work of C-ONE Technology Corporation ("C-ONE") and other licensors if any. C-ONE provides limited guarantee or assurance as to the quality or performance of such software subject to the terms hereof as well as applicable laws and regulations. The use of such software is governed by the terms and conditions of End User License Agreement, or the like, which will be provided by in digital or written form that is included in the software or otherwise. Please do not install the software before you read and agree to the terms and conditions of the End User License Agreement, if any.

C-ONE IS NOT LIABLE FOR ANY DAMAGES SUFFERED AS A RESULT OF USING, MODIFYING, CONTRIBUTING, OR COPYING THE SOFTWARE. C-ONE IS NOT LIABLE FOR ANY INDIRECT, INCIDENTAL, PUNITIVE, SPECIAL OR CONSEQUENTIAL DAMAGE (INCLUDING LOSS OF BUSINESS, REVENUE, PROFITS, USE, DATA OR OTHER ECONOMIC ADVANTAGE). In no event will C-ONE be liable for damages hereunder in excess of the amount you provided to C-ONE for this product. This indemnity is in lieu of any other indemnity or warranty, express or implied, with respect to patents and copyrights.

The remedies set forth herein are exclusive and the liability of C-ONE for a breach of C-ONE obligations with respect to the Products (including warranty obligations) shall be limited to the actual damages incurred by you, provided that such liability for damages shall not exceed the total amount of the relevant Products to which such breach relates. In addition to the foregoing limitations, in no event shall C-ONE's aggregate liabilities for all claims made by you exceed the aggregate annual amount in respect of all the Products (or any portion thereof) delivered up to the date of any claim.

1. Introduction

Secure AES Manager is a password-protection access control management tool that enables you to create, manage and allocate your defined Private Drive on Pretec's hardware-based 256 bit AES encryption products.



2. System Requirements

- Pentium III Processor
- 128MB RAM
- 10MB free hard drive disk space
- Operating Systems: Windows Vista™ Service Pack 1 (32-bit, 64-bit), Windows XP® Service Pack 3, Windows 2000® Service Pack 4
- Available USB 2.0 port
- Turn on **use visual styles on windows and buttons** option of system performance

To modify the system performance options, follow these steps:

1. Right-click **My Computer**, and then click **Properties**.
 2. Click the **Advanced** tab.
 3. Under **Performance**, click **Settings**.
 4. In the **Performance Options** dialog box, click the **Visual Effects** tab.
 5. Select **Processor scheduling** option, click **OK**.
 6. Click **OK** to close the **System Properties** dialog box.
- Pretec hardware-based AES-256 encryption products

3. Getting Started

To launch Secure AES Manager, please plug in your Pretec device and execute “**Secure AES Manager.exe**” in the drive (Figure 1).

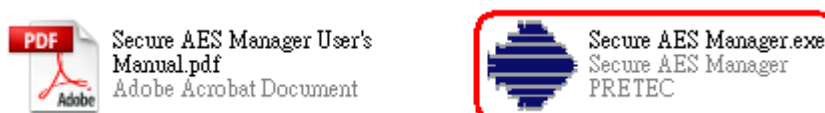


Figure 1. Secure AES Manger Application

CAUTION! If your operating system shows a pop-up message with “Find a new device,” followed by a reboot request, please click “No” to cancel it.

The Secure AES Manager application welcome window. (Figure 2). Drive status will display in the **InfoBar** (Table 1). Click **Refresh** button to update drive status and display in the **InfoBar**.

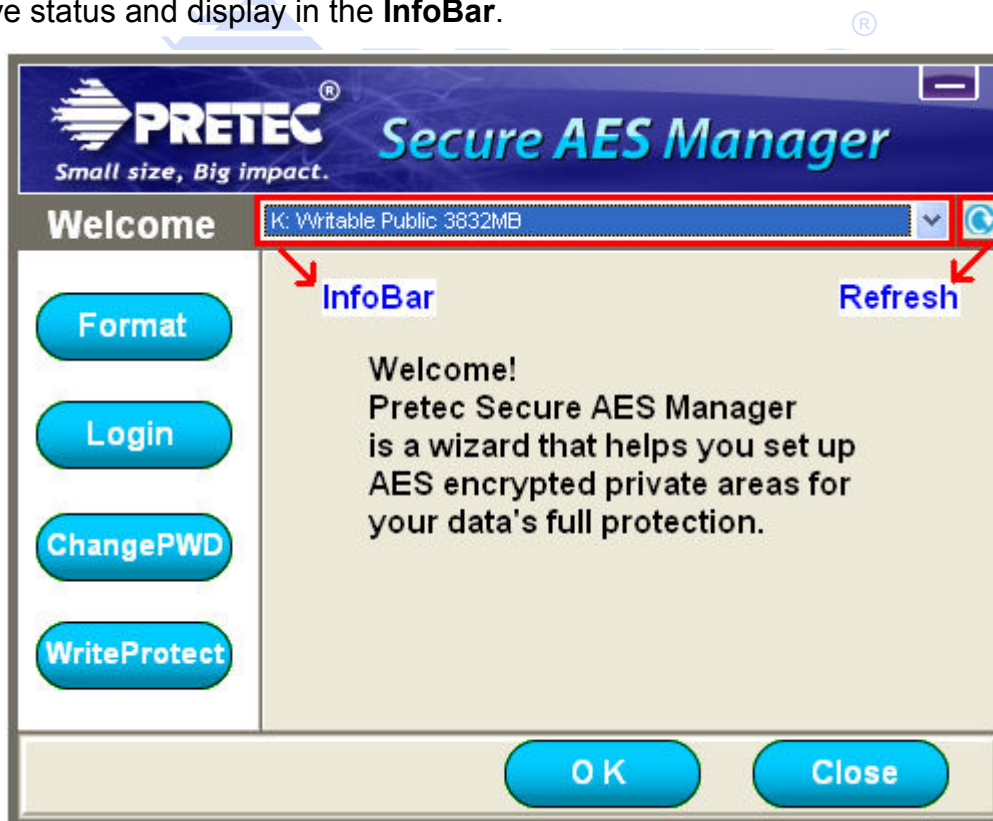


Figure 2. Welcome Window

Table 1. InfoBar Collation Table

Info	Description
Public	Public Drive, with normal access feature
Private	Private Drive, with password protected and hardware-based AES-256 encryption feature
Writable	Drive status, can be Read/Write directly
ReadOnly	Drive status, with write protect setting

3.1 Create Your Private Drive

Press **Format** option, drag the slide bar left or right to determine the size of your Private Drive (Figure 3).



Figure 3. Format Window

Note: The minimum size of Public Drive will remain 20MB for the memory space of Secure AES Manager application and future upgrades purpose.

1. Set Password

After dragging the slide bar and select the size of Private Drive, you need to set its protection password for you login later.

- a. Private Drive Login Password (required, max 16 characters)
- b. Confirm Password (required, max 16 characters)
- c. A hint to remind you of your password (optional, max 32 characters)

CAUTION! Please keep your password in mind. Password can **NOT** be recovery by any method if it's lost.

2. Format

After size and password are determined, click **OK** to format this drive.

CAUTION! When you create Private Drive, this drive will be formatted and **ALL** data saved on your drive will be erased. Please backup your personal data before formatting your drive.

3. Format Warning Message

The first Secure AES Manager Format Warning window (Figure 4). To process the format operation, click **Yes**.

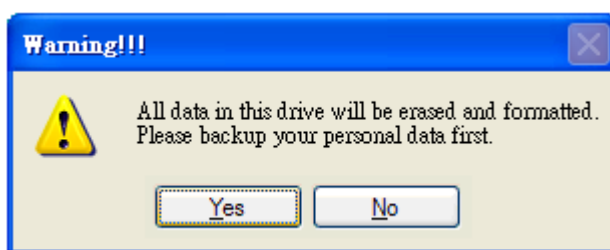


Figure 4. Format Warning

The second Secure AES Manager Format Warning window (Figure 5). To continue and perform the format operation, click **Yes**.

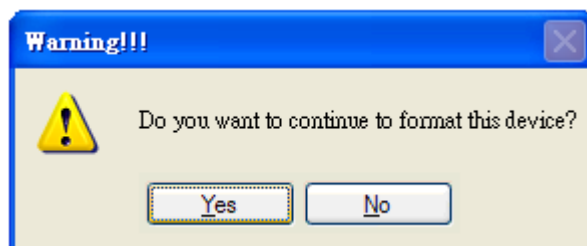


Figure 5. Format Warning

4. Format Succeeded Message

After the format process is completed, a Format Succeeded window displayed (Figure 6). The Secure AES Manager application will refresh itself and the Login option will switch to the left top of the window. Click **OK** to continue. You can now login and access your Private Drive.

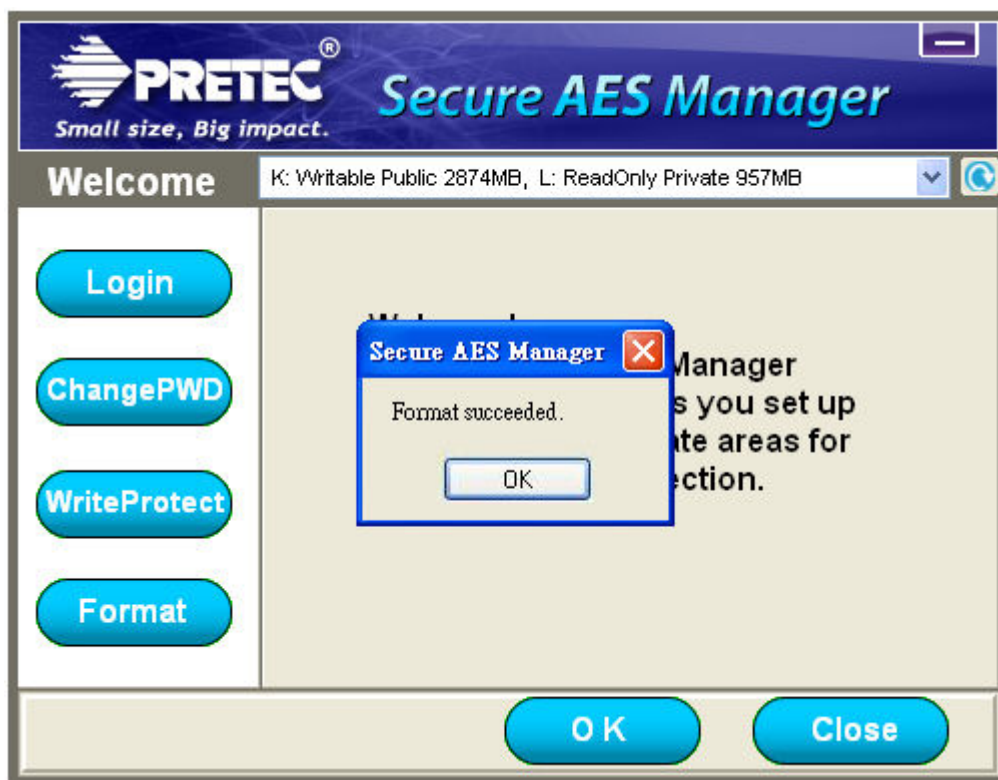


Figure 6. Format Succeeded Window

3.2 Login Your Private Drive

After you have created a Private Drive, the **Login** option will automatically

switch to the left top on the Secure AES Manager menu. Press **Login** option, switch to login page (Figure 7). Before you login to Private Drive, its ReadOnly status will display in InfoBar, it means no one except you can grab any secret data without user authentication.



Figure 7. Login Window

1. Type in Password

To login your Private Drive, type in your password and click **OK**. A Login succeeded message is displayed as shown in (Figure 8). After you succeeded login to Private Drive, it will refresh to Writable status display in InfoBar.



Figure 8. Login Succeeded Window

If you enter the incorrect password, an error messages is displayed as shown in (Figure 9).



Figure 9. Incorrect Password Warning

Note: If you cannot login to your Private Drive, please remove this device re-plug into computer and kindly try again.

2. Forget Password

If you forget your password and have established a password hint, click **Hint** for a prompt message in the Secure AES Manager window (Figure 10).



Figure 10. Password Hint

3. The Auto Logout Option

If you enable **Auto Logout** option, the **Secure AES Manager** application will auto logout of your Private Drive simultaneously when you **Close** it (Figure 11). Or you can use **Logout** option to logout of your Private Drive manually.



Figure 11. The Auto Logout Option

3.3 Use Your Private Drive

When you first login to your Private Drive, a drive format requirement will show up and please follow it to process format procedure. After it is formatted, you can operate this drive as a general removable drive. All data stored in this drive will be under AES encrypted protection.

3.4 Log Out of Your Private Drive

After you login to your Private Drive, the **Login** option will switch to **Logout** option automatically and display on the left top Secure AES Manager menu. Press **Logout** option, switch to logout page (Figure 12).



Figure 12. Logout Window

1. Save and Close All Files

Save and close **ALL** files that you have accessed on your Private Drive before you process logout procedure.

2. Logout of Private Drive

Click **OK** to log out of your Private Drive. A logout succeeded message is displayed as in (Figure 13). After you succeed in logging out of Private Drive, its status will automatically refresh to ReadOnly and display in InfoBar.



Figure 13. Logout Succeeded Window

3. The Auto Logout Option

If you enable **Auto Logout** option, the **Secure AES Manager** application will auto logout of your Private Drive simultaneously when you **Close** it. Or you can use **Logout** option to logout of your Private Drive manually.

4. Advanced Setting

4.1 Change Your Password

Press **ChangePWD** option switch to Password Change page (Figure 14).



Figure 14. Password Change Window

Type in your old password and choose a new password to change Private Drive login password. Click **OK** to set new password (Figure 15).

- Old Password (required, max 16 characters)
- New Password (required, max 16 characters)
- Confirm Password (required, max 16 characters)
- A hint to remind you of your password (optional, max 32 characters)

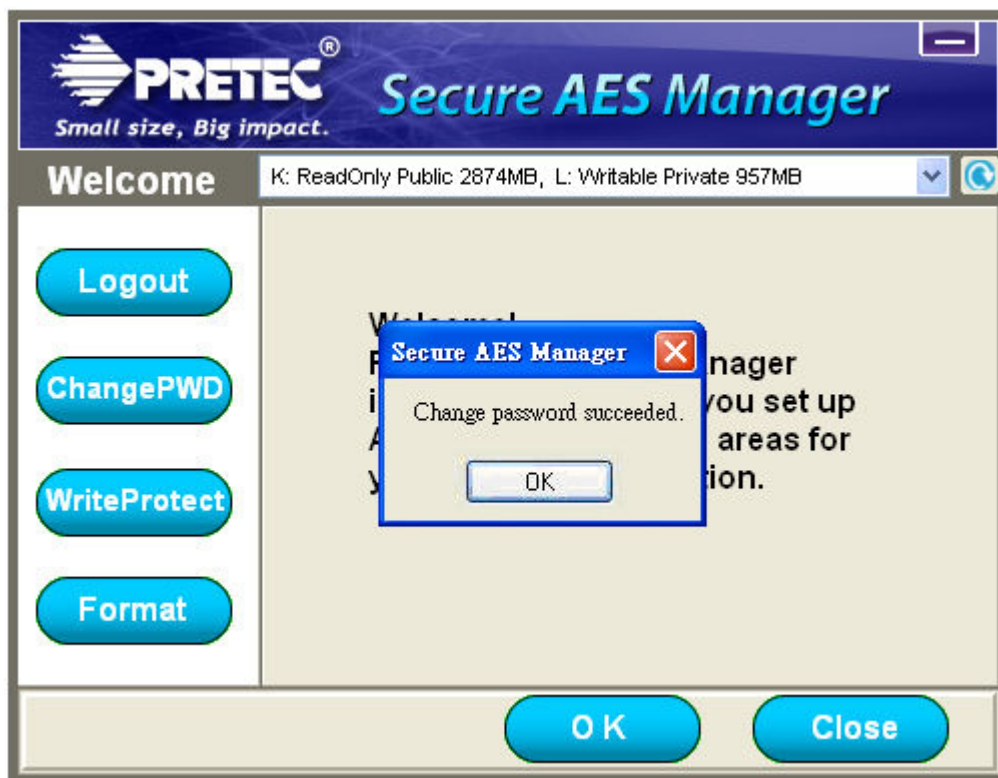


Figure 15. Password Change Succeeded Windows

If you enter the incorrect password, an error message will pop up as shown in (Figure 16).



Figure 16. Password Unconfirmed Warning

4.2 Write-Protect Setting

Press **WriteProtect** option switch to write-protected properties setting page (Figure 17).

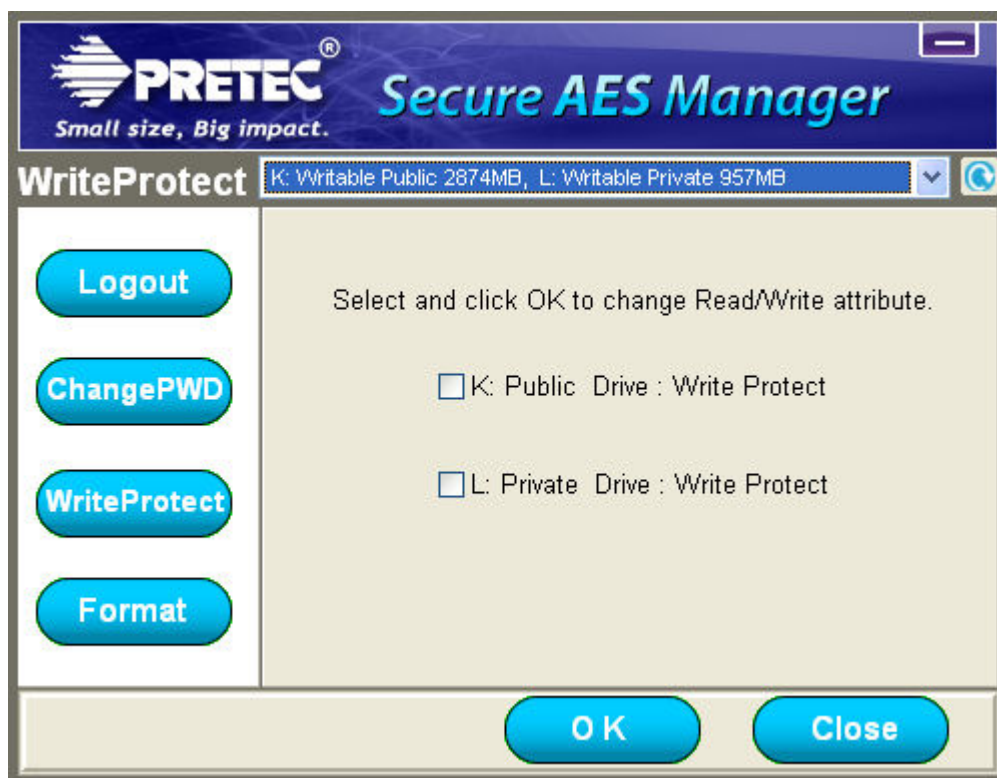


Figure 17. Write-Protected Setting Window

Select and click **OK** to set drives' write-protect attributes, a write-protect setting succeeded message is displayed as shown in (Figure 18). And the update status will display in InfoBar as described in Section 3.



Figure 18. Write Protect Setting Succeeded Window

5. Troubleshooting

5.1 Lost Password

If you lose your password, you can change the password by reformatting the Private Drive as described in Section 3.1.

5.2 Preventing Data Loss

Close **ALL** files and applications **on the drive** prior to **Secure AES Manager** login/logout or system shut down. If you attempt to perform any of these tasks prior to saving your data, file modifications may be lost.

5.3 Open Connection Error

If an open connection error message pops up and guides you to close all files and applications, please click **OK** and check the following ...

- Close open files and/or applications on the Pretec drive and retry login, logoff, system restart or shut down.
- If you're using Windows Vista[™], make sure ReadyBoost[™] cache is not enabled on the Pretec drive. After disabling ReadyBoost, reinsert the drive and try again.

6. FAQ

To see more and the latest FAQs, visit to Pretec Website at www.pretec.com.

Q: How do I know if I am working in the Private Drive?

A: Private Drive allows you to save and retrieve files, which means you are working successfully in the Private Drive.

Q: Why does an error dialog "Unable to create the file The media is write protected." pop up when I use Private Drive?

A: Please check if write-protect properties is set up or login is not successful.

Q: Can I manually copy data between Public Drive and Private Drive?

A: Yes. You have to log in Private Drive, and you'll see it switch to Writable status display in InfoBar. And then you can copy data between Public Drive and Private Drive.

Q: I accidentally deleted Secure AES Manager from my Pretec hardware-based AES encryption device. How can I access the data in my Private Drive?

A: Download the latest version of Secure AES Manager application via the Web at www.pretec.com to your Pretec hardware-based AES encryption device. The Private Drive previously created will now be accessible.

Q: Can I use more than one Pretec hardware-based AES encryption device with Secure AES Manager simultaneously?

A: Yes. Secure AES Manager is design for Pretec hardware-based AES encryption products, so it will recognize all Pretec hardware-based AES encryption device and display status on InfoBar.

7. Technical Support and Contact Information

Headquarters : Pretec / C-ONE Technology Corp.
Address : 8F, No.5, Lane 345, Yang Guang St., Neihu District, Taipei
City 114-91, Taiwan (R.O.C.)
Tel No. : +886-2-2659-4380
Fax No. : +886-2-2659-4390
E-mail : General Information/Sales - info@pretec.com
Marketing Department - pretec_marketing@pretec.com
Technical Support - fae@pretec.com
Website : www.pretec.com

